



## JUICY IPA

A hazy, hoppy, fruity IPA. Brewed with oats and torrefied wheat for a full body with residual sweetness then dry hopped for tropical, stone fruit and citrus aromas.



**Size:** 330ml can

**ABV:** 6.0%

**Allergens:** Malted Barley, Yeast, Wheat

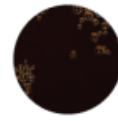
### Beer colour



Light



Amber



Dark

### TASTE

#### INTENSITY

**5**

/5

#### SWEETNESS

**3**

/5

#### BITTERNESS

**4**

/5

#### HOPPY

**5**

/5

#### MALTY

**2**

/5